

ASM Steel Band Point Hoist P 250/500 JR



Characteristics

The JR (Junior) is a steel band point hoist especially designed for application on stages, in halls and studios. It operates using two steel bands and is designed and tested to comply with the requirements of German Safety regulation, DGUV V17 (BGV C1) for use in public venues and theatres. The combination of a dynamically irreversible worm gear and an integral patented safety catch system within the gearbox has been approved by the German Technical Control Institute (TÜV) for operation without conventional brakes.

The elimination of brakes greatly reduces maintenance requirements and permits a smooth deceleration of the load, even under emergency stop conditions.

When connected to an ASM GENESIS Control system, complex, multiple movements can be programmed and executed quickly and easily.

The use of steel bands as a load carrier guarantees a smooth, steady and quiet movement.

The absence of stretch in the load carrier, compared with steel wire ropes, ensures consistent positioning of the load, regardless of length of service or load.

CLASSIFICATION ACCORDING TO DGUV V17 (BGV C1)

Asynchronous group drive with group Stop and 24V DC Control

The point hoist is equipped with an over load switch, limit switch and 24 V Electronic Control

Asynchronous group drive with group Stop, controlled by ASM Genesis LC 8 AG

The point hoist is equipped with a DMS load sensor, limit switch, reversing contactors and the GENESIS TWIN-CORE axis card.

Synchronous group drive controlled by ASM Genesis LC 8 SG

Equipped with 2x absolute encoder, frequency inverter, and the Genesis TWIN-CORE SIL3 axis card.

position synchronised drive, time synchronised drive with predetermined speed control

Features:

- DGUV V17 (BGV C1), DIN 56950, up to SIL3
- Innovative steel carrying bands free of any process wear and tear
- Smooth running
- Silent
- Special ASM irreversible worm gear – no brakes therefore low maintenance
- Worm gear safety catch approved by TÜV (German technical control institution)
- Smooth deceleration of the load
- Integrated control components
- Self climbing operation possible
- Artist flying possible
- Horizontal, vertical and diagonal movements of loads permitted
- Adaptable for individual applications
- Hook load attachment by means of tear proof, tested lifting eye

ASM Steel Band Point Hoist P 250/500 JR

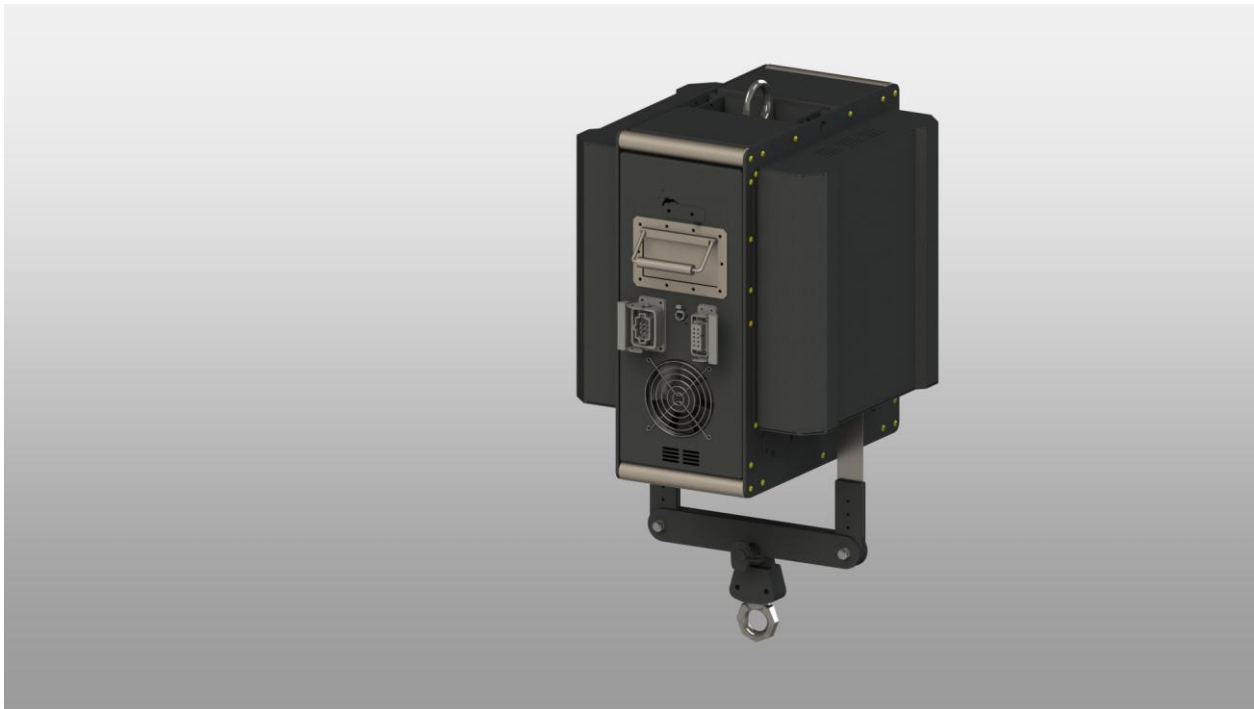


Areas of Application

- Stages, multi-purpose halls and studios
- For the set up and movement of scenes

Technical Data P250JR / P500JR

Weight approx:	63 / 84 kg
Standard lifting:	12 m (can be extended to 20 m)
Motor power:	1,5 / 4 kW
Load carrying capacity	250 / 500kg
Speed	0-6 or 0-12 m/min
Load carrying method	Steel band 30 x 0,4 / 45 x 0,4 mm
Voltage supply:	3 Ph MP + PE 400 V
Noise level:	< 45 dBA



ASM Steel Band Point Hoist P 250/500 JR

